

SONEIL

6033 Shawson Dr., Unit 29, Mississauga
Ontario, Canada L5T 1H8, Email: info@soneil.com
Ph.: 905 565 0360 Fax: 905 565 0352



Visit us on the web at <http://www.soneil.com>

PARALLEL & SERIAL APPLICATION OF SONEIL CHARGERS

Some models of soneil chargers can be used in PARALLEL or SERIAL arrangement to provide higher current or charge multiple batteries. Before trying this arrangement please consult with SONEIL.

1) **Parallel arrangement:**

Two or more chargers can be connected in parallel to increase current. Connect all +ve together to the +ve of the battery and all -ve together to the -ve of the battery.

Example: For model 2412SRF 24V/ 6A charger – Connecting 2 in parallel will give 24V/ 12A; connecting 3 in parallel will give 24V / 18A; connecting 10 will give 24V / 60A.

Caution: Do not mix different models of chargers.

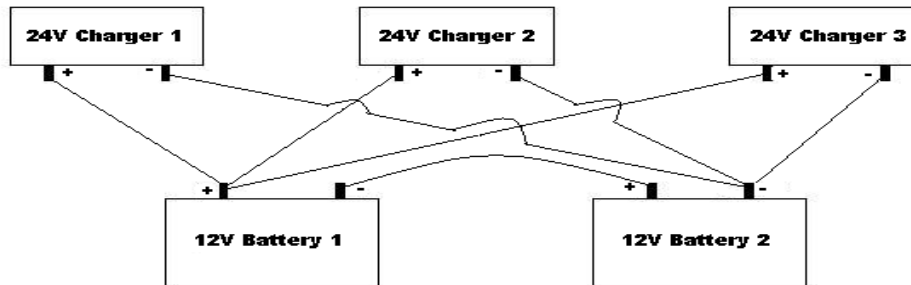


Diagram shows 3 of 24V chargers in parallel charging 24V battery system

2) **Serial arrangement:** Two or more chargers can be connected in series to charge multiple batteries. To charge 72V batteries (6 of 12V batteries in series); you can use 6 of 12V chargers or 3 of 24V chargers or 2 of 36V chargers.

Example: To charge 72V batteries (6 of 12V batteries in series), you can use 3 of 24V chargers. Connect the +ve of the first 24V charger to the +ve of the first 12V battery and the -ve of the first charger to the -ve of the second 12V battery. Now connect +ve of the second 24V charger to the +ve of the third 12V battery and the -ve of the second charger to the -ve of the fourth 12V battery.

And so on

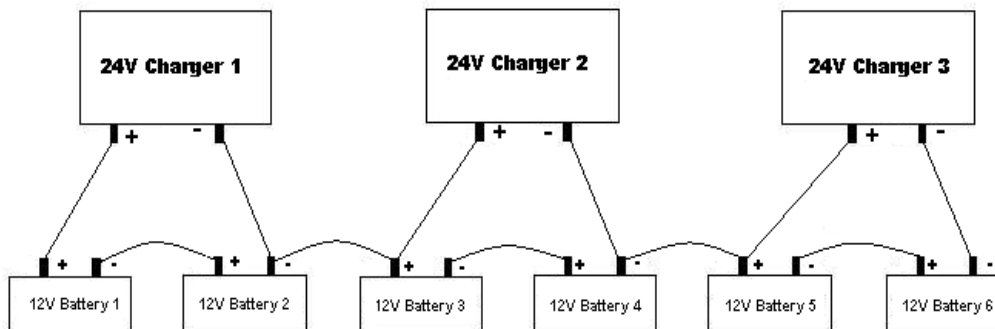


Diagram shows 3 of 24V chargers in Series charging 72V battery system